

COVID-19 in Massachusetts: Current Conditions

Jon Levy

Professor and Chair, Department of Environmental Health

Boston University School of Public Health

Email: jonlevy@bu.edu; TW: @jonlevyBU

Massachusetts Coalition for Health Equity Virtual Event

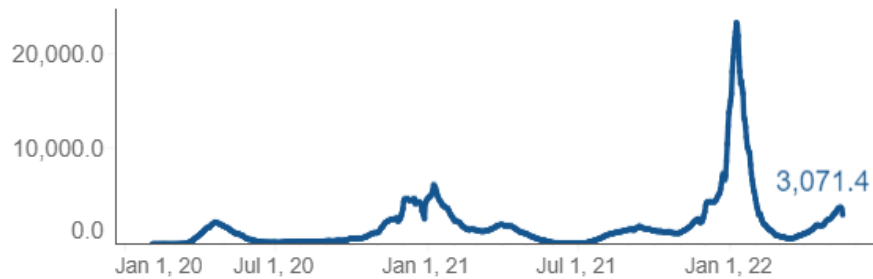
May 18, 2022

Take-home messages

- We are in the midst of a surge larger than any except for the winter Omicron surge, with few public health protections and the most infectious variant yet
- Only about 3M of the 7M residents of MA have been boosted (crucial to protect against Omicron variants)
- Those boosted are disproportionately from higher-income communities where risks of severe outcomes are lower

Cases

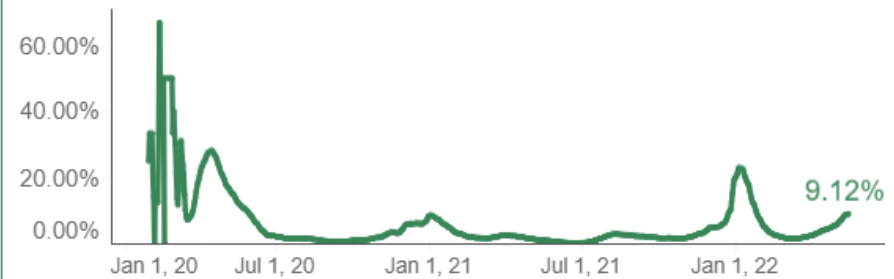
7-day average of COVID-19 confirmed cases



The lowest observed value was 64.1 on 6/25/2021.

Testing

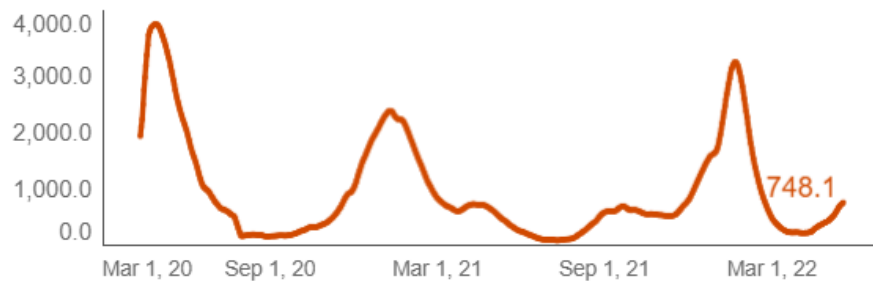
7-day weighted average percent positivity



The lowest observed value was 0.31% on 6/25/2021.

Hospitalizations

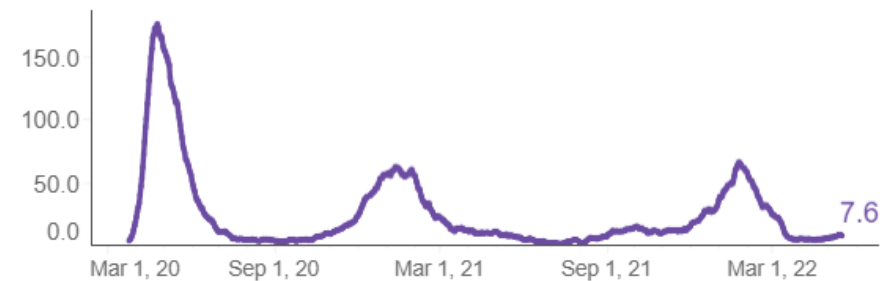
7-day average of hospitalizations



The lowest observed value was 84.3 on 7/8/2021.

Deaths

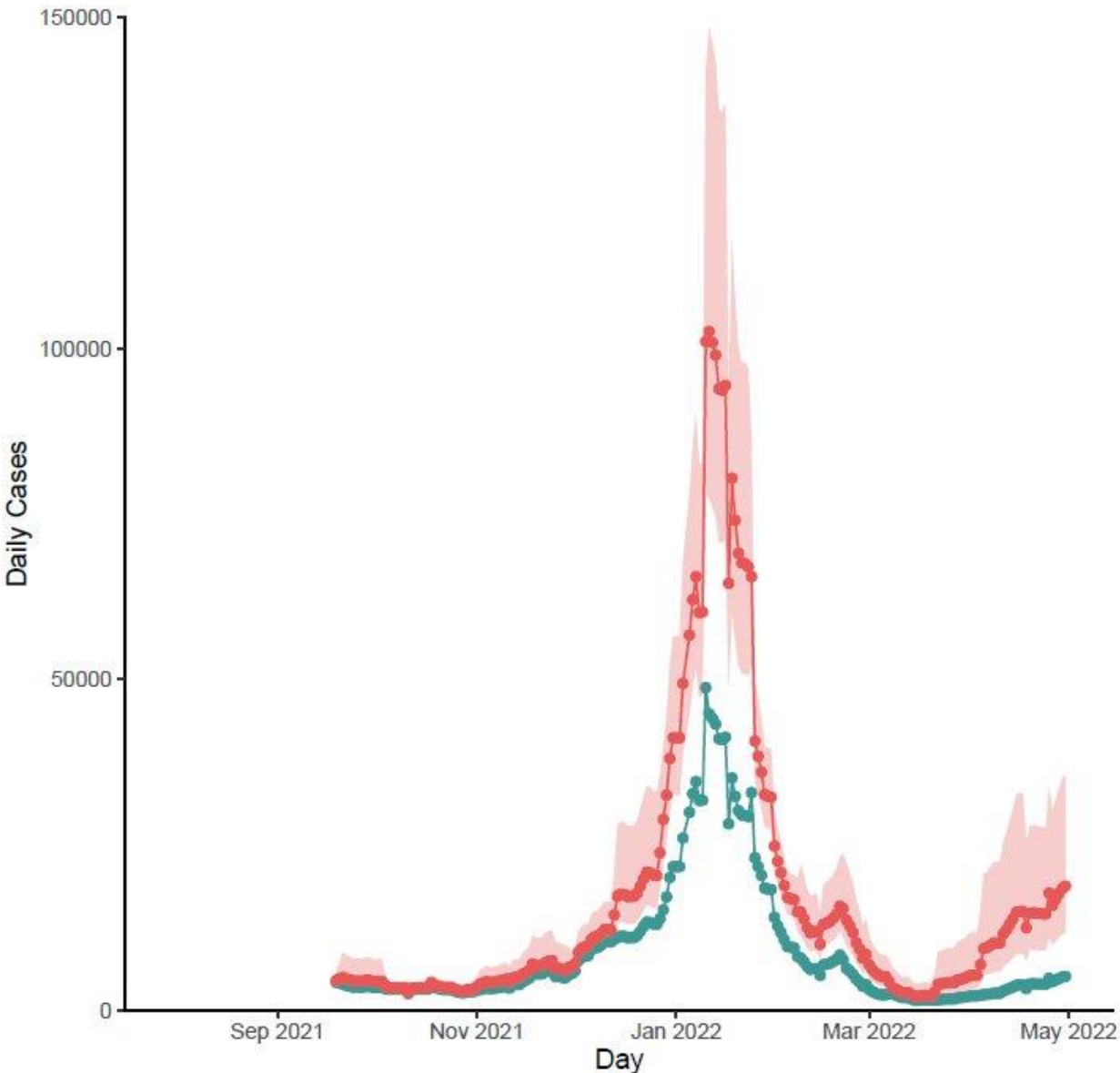
7-day average of confirmed deaths



The lowest observed value was 1.0 on 7/11/2021.

5/17: Highest single-day death count since the winter;
hospitalized > 800 (below 400 1 month ago)

Source: MA DPH

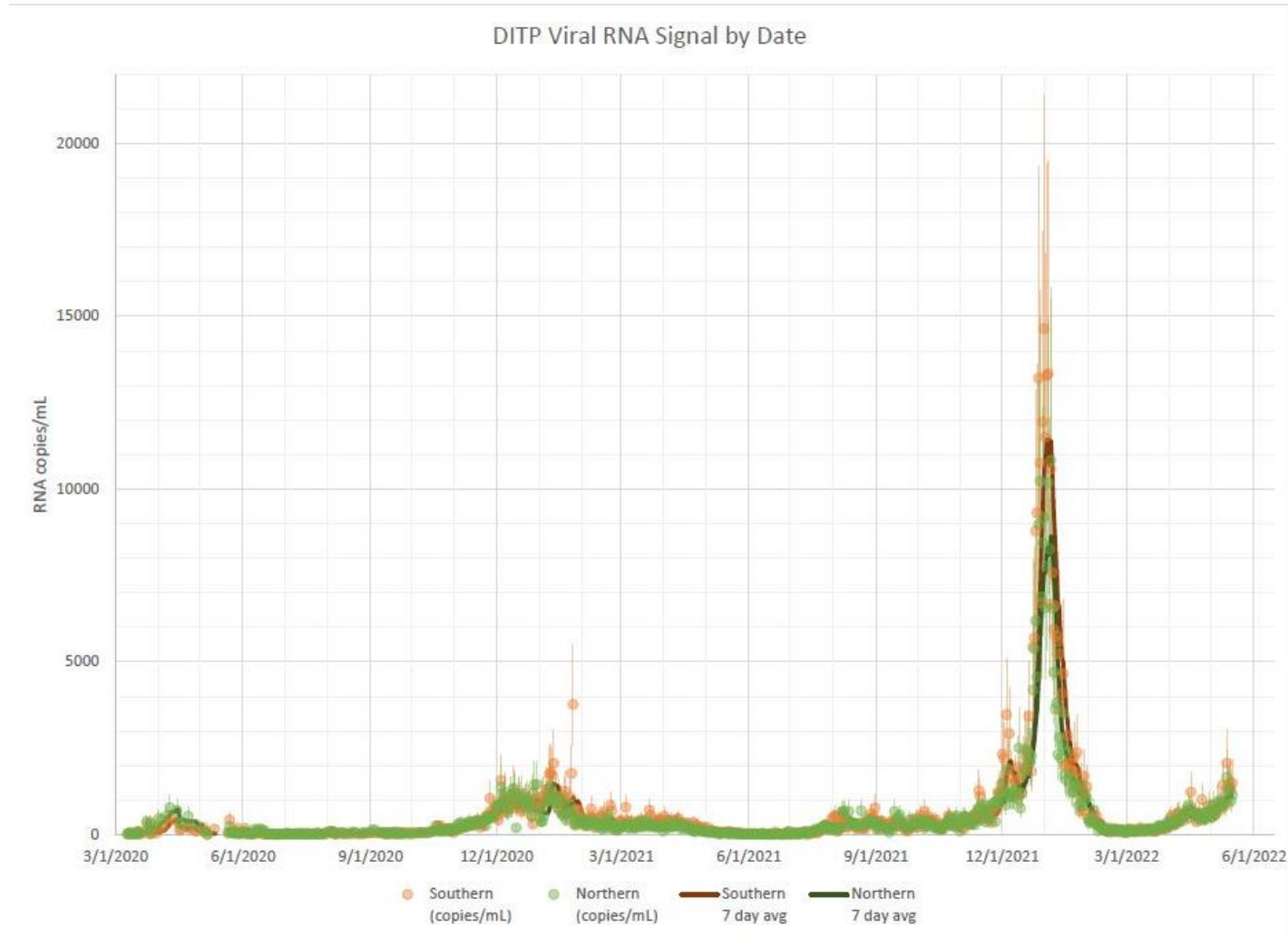


John Brownstein from Boston Children's/ Harvard Medical – “A hidden BA.2.12.1 COVID wave in New England”
-> true cases ~ 3.5 times higher

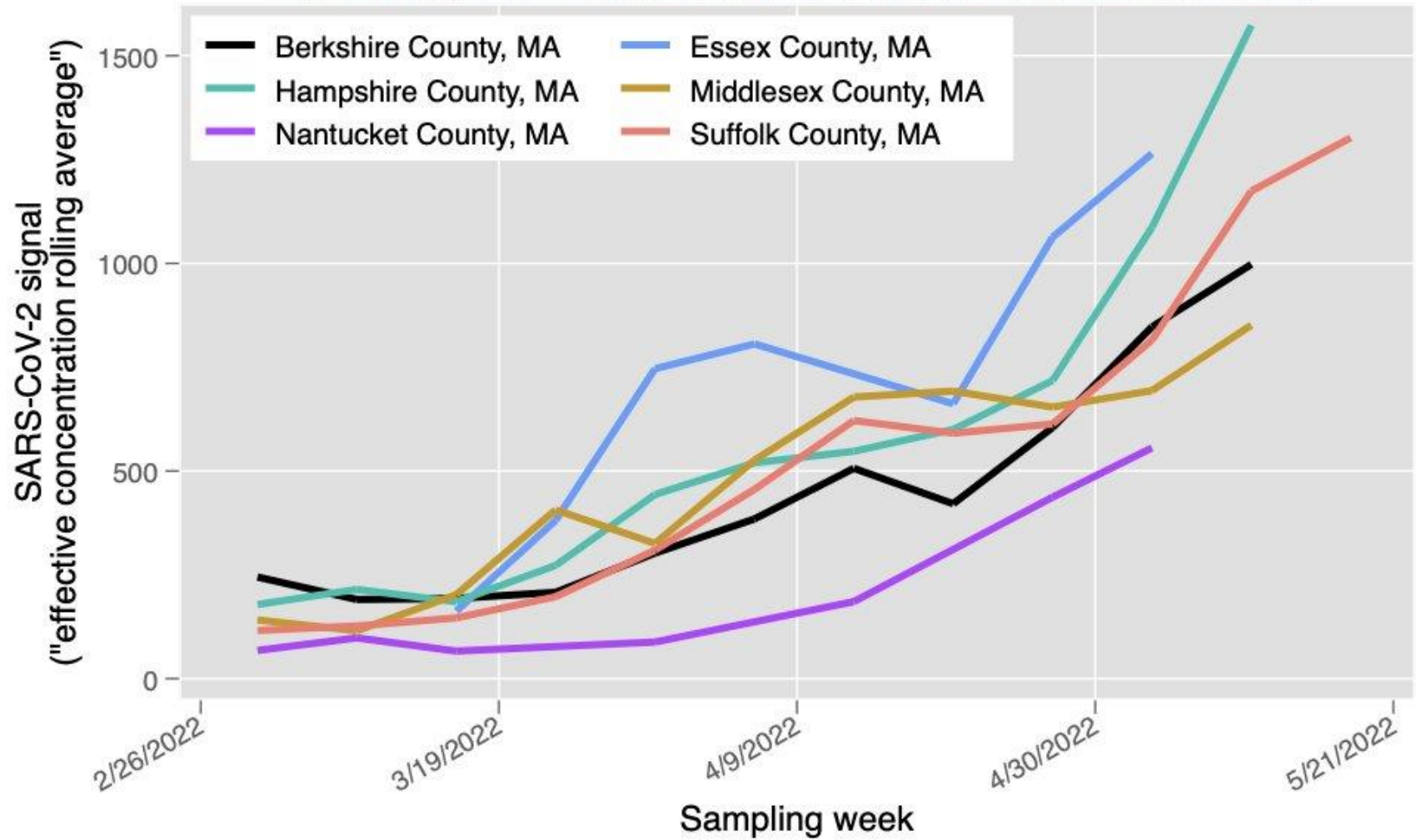
Epi-Curve

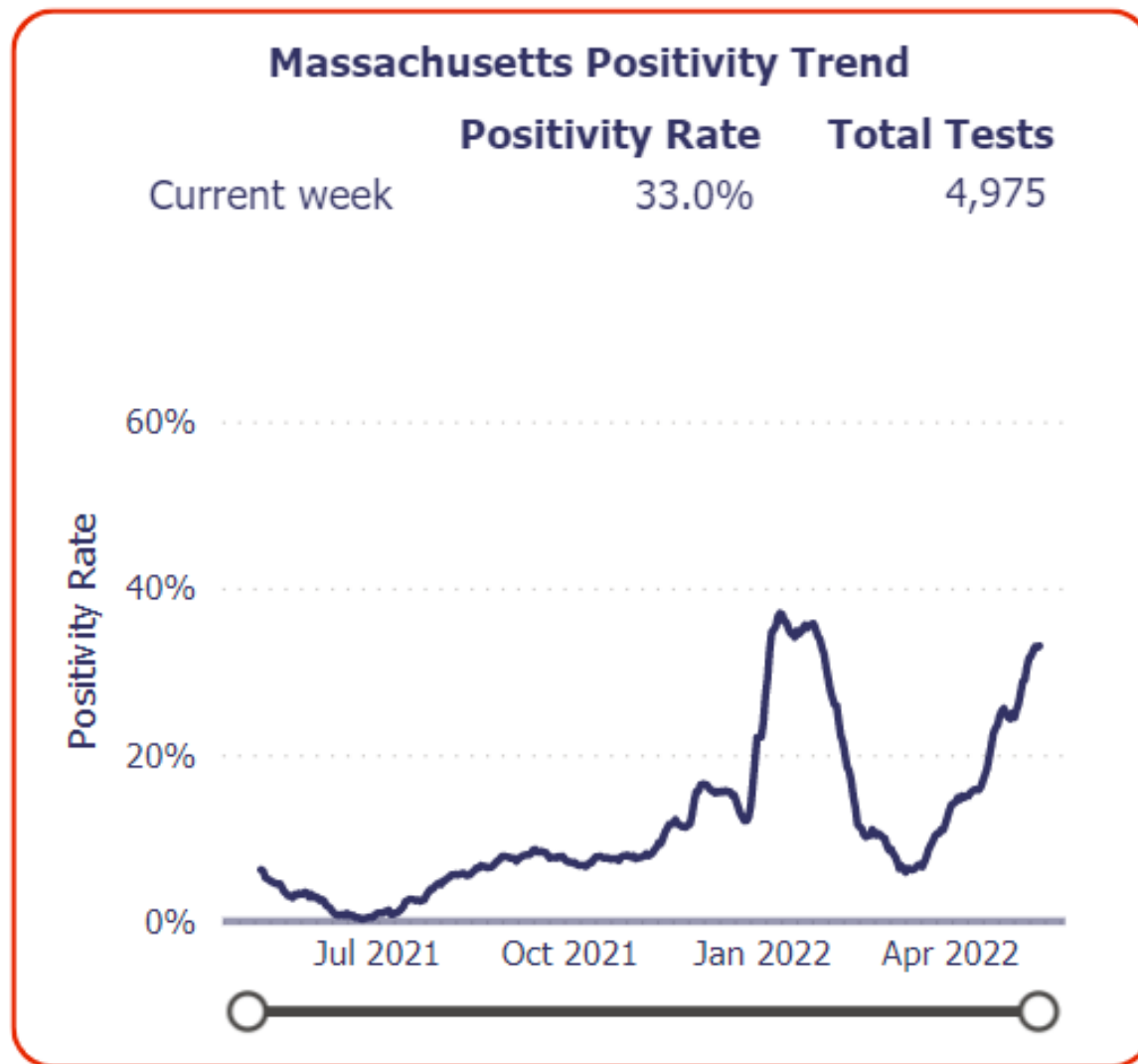
- Official Case Count
- Estimated Count

Biobot Data - samples submitted through 05/16/2022



Analysis: Andrew Lover, LoverLab.io, May-18-2022. (Data to May-18-2022).
Data: <https://github.com/biobotanalytics/covid19-wastewater-data/find/master>





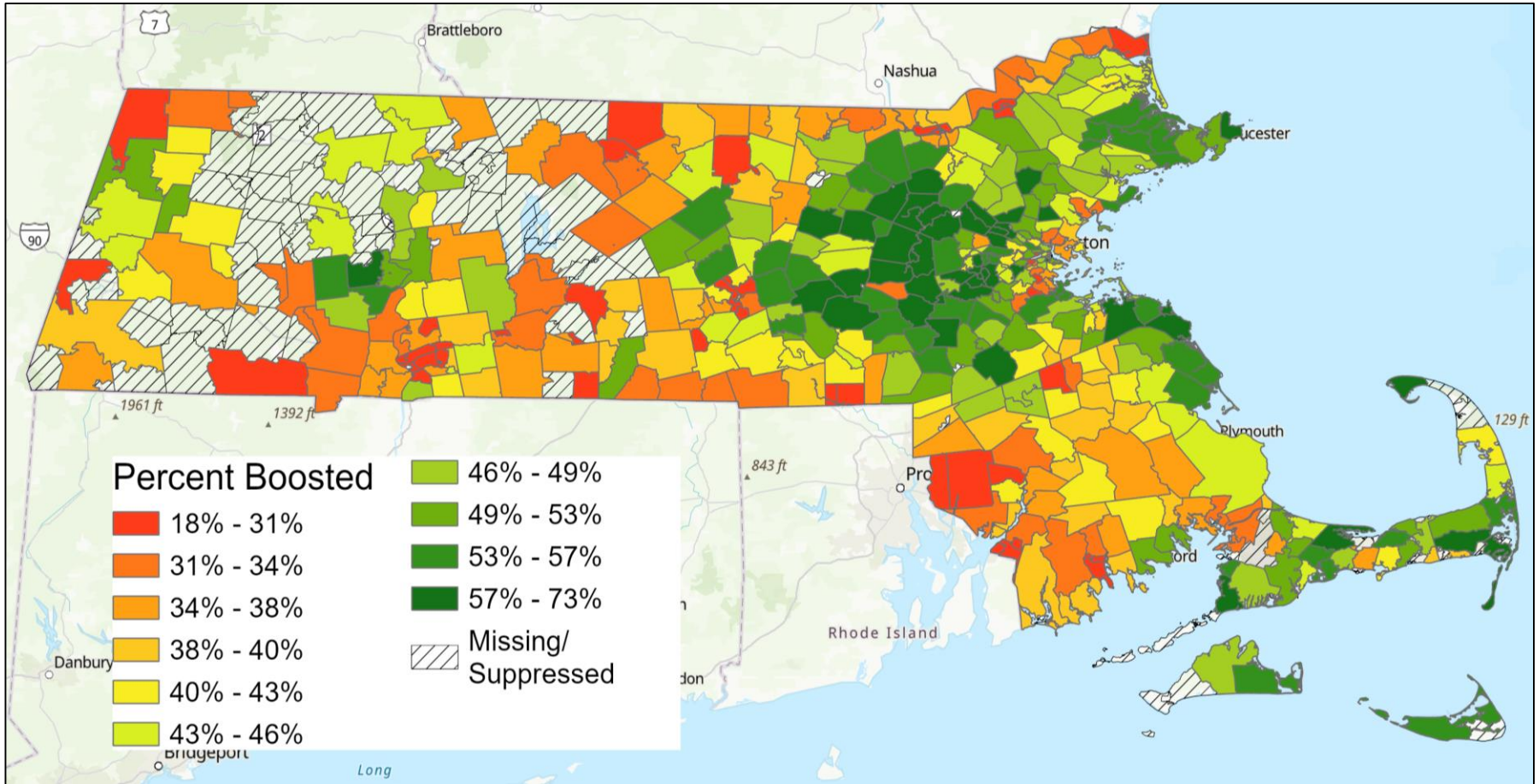
Source: Walgreens

Massachusetts Department of Public Health COVID-19 Vaccine Data – Tuesday, May 17, 2022

	5/11	5/12	5/13	5/14	5/15	5/16	5/17
DOSES ADMINISTERED (MIIS)*							
At least one dose -- number of people who received at least one dose of Moderna, Pfizer, or Johnson & Johnson vaccine	6,199,351	6,200,558	6,201,713	6,202,833	6,204,183	6,205,036	6,205,848
Fully vaccinated -- number of people who received a primary series of Moderna, Pfizer, or Johnson & Johnson vaccine**	5,369,682	5,370,727	5,371,776	5,372,818	5,373,672	5,374,226	5,375,014
Booster doses -- number of people who received a booster dose of Moderna, Pfizer, or Johnson & Johnson vaccine***	3,020,367	3,022,469	3,024,530	3,026,609	3,028,097	3,029,137	3,031,055
Additional booster doses -- number of people who have received at least 2 booster doses****	359,059	367,691	376,074	384,278	390,590	394,817	400,707
Grand Total Doses Administered (MIIS)	14,608,586	14,621,590	14,634,266	14,646,733	14,656,751	14,663,431	14,672,884

Source: MA DPH

% boosted as of 3/1/22 (Bor et al. 2022)



J Bor, SA Assoumou, K Lane, Y Diaz, B Ojikutu, J Raifman, JI Levy. Inequities in COVID-19 vaccine and booster coverage across Massachusetts ZIP codes: large gaps persist after the 2021/22 Omicron wave. <https://www.medrxiv.org/content/10.1101/2022.04.07.22273593v2>

Boston University School of Public Health



% boosted as of 3/1/22 (Bor et al. 2022)

